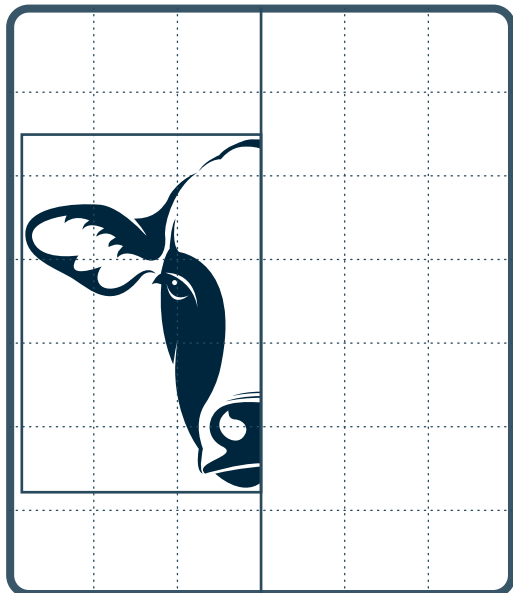


Can you find the 5 pizza toppings?

C H E E S E V R M
 H S Q A D G B L U
 P E P P E R B R S
 L V E A S F L T H
 K S K C K S W G R
 H A M D N C M W O
 O G D E G K M D O
 U D F K F L N M M
 S W E E T C O R N

mushroom • ham • cheese • sweetcorn • pepper

Can you draw the other side of the cow?



Maths Game!

Can you use your brain to work out these sums?

8 ○ 2 ○ 4 = 6 8 ○ 5 ○ 4 = 7
 7 ○ 1 ○ 3 = 9 6 ○ 6 ○ 4 = 8
 3 ○ 4 ○ 5 = 12 9 ○ 5 ○ 3 = 7

1 (across) bee
 2 (down) butterfly
 3 (fish)
 4 (leaf)
 5 (lizard)
 6 (hive)
 7 (flower)
 8 (mushroom)
 9 (across) stone
 10 (down) stump
 11 (ladybug)
 12 (mouse)
 13 (grass)
 1 (down) cloud

Answer: NATURE

THE STAMFORD ARMS

KIDS MENU £8.50

INCLUDES A DRINK AND A SCOOP OF ICE CREAM

UPGRADE TO FRUIT SHOOT FOR £1.00

Chicken nuggets

Fish Fingers

Sausage

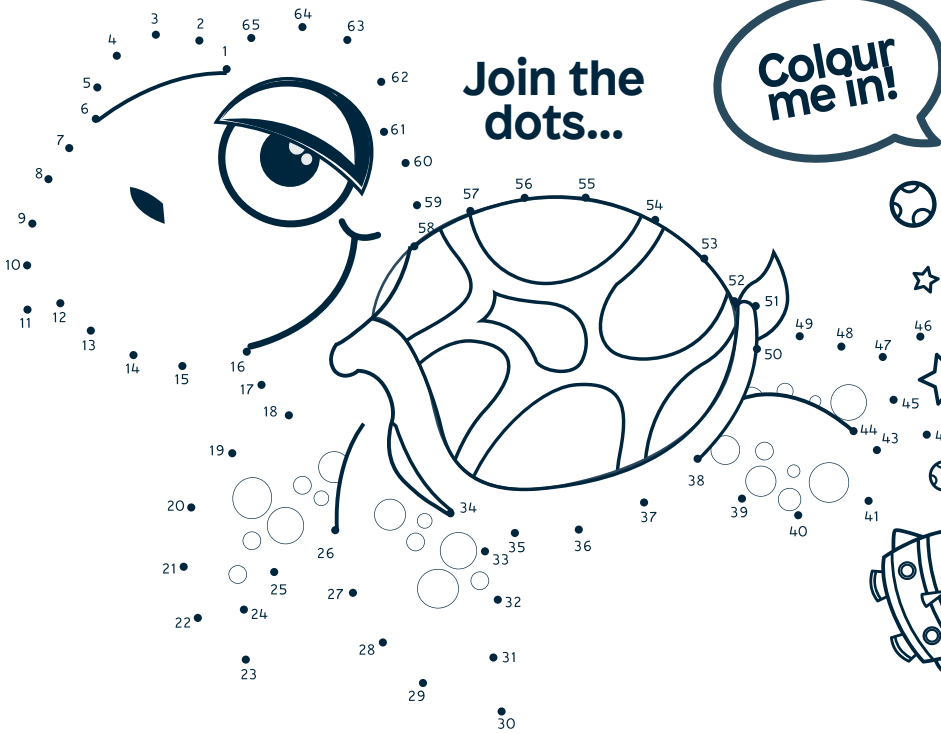
Chicken burger

Plant burger **Ve**

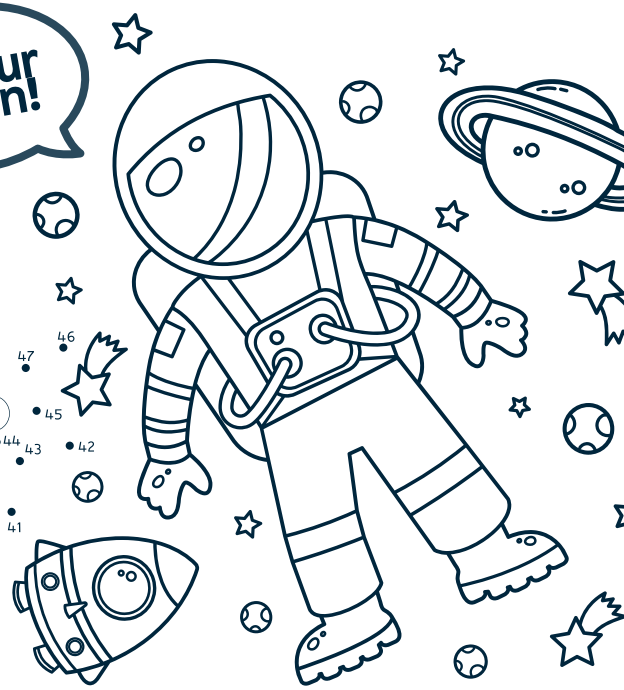
The dishes above are served with french fries or mash and your choice of garden peas, beans or vegetable sticks

Cheese and tomato pizza **v**

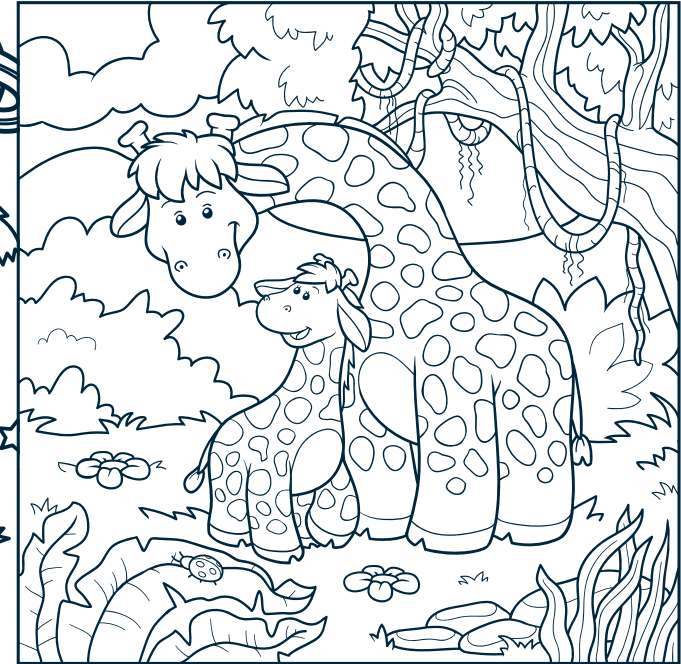
Food Allergies and Intolerances: Please speak to a team member about the ingredients in your meal, when placing your order. Thank you.



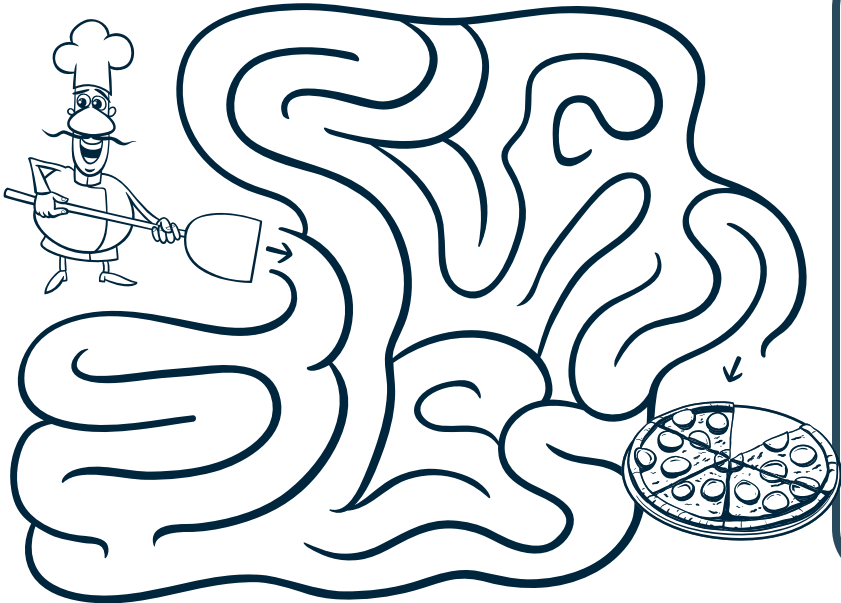
Colour me in!



Can you spot the 12 differences?



Can you help chef get the pizza out of the oven?



Can you finish the picture?

